

TAX MAP INDEX

TAX MAP SCALE: SEE SCALE ON EACH SECTION MAP

NUMBERING OF PARCELS:

EACH TOWN IN THE COUNTY OF GENESEE HAS BEEN DIVIDED INTO "SECTIONS" DESIGNATED THUS - (6). ALL SECTIONS CONTAIN FROM TWO TO EIGHT FARM LOTS. WITHIN EACH SECTION ARE AREAS BOUNDED BY ROADS, RAILROADS, WATERWAYS OR OTHER NATURAL BOUNDARIES, WHICH ARE DESIGNATED AS "BLOCKS". EACH LOT OR "PARCEL" WITHIN THE BLOCK IS NUMBERED CONSECUTIVELY, STARTING IN THE NORTHWEST CORNER OF EACH BLOCK AND PROCEEDING CLOCKWISE.

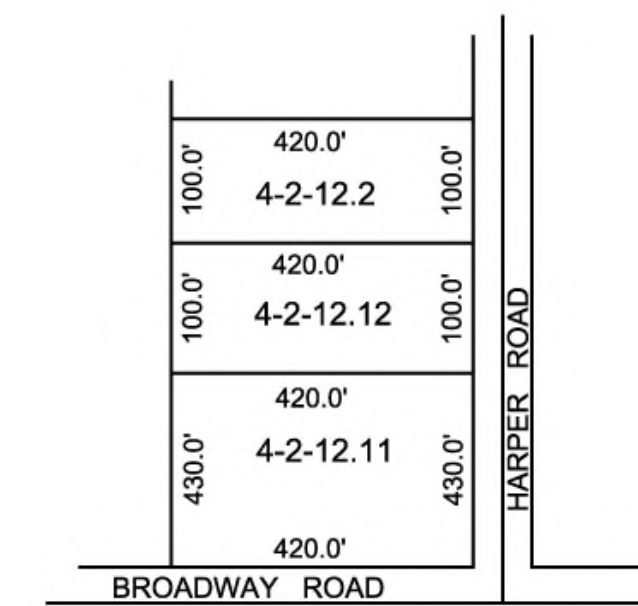
THEREFORE, THE PARCEL NUMBER FOR A SPECIFIC PROPERTY IS A COMBINATION OF THE NUMBERS OF THE SECTION, BLOCK AND PARCEL. FOR EXAMPLE, PARCEL NUMBER 4-2-12 MEANS THAT THE PROPERTY MAY BE FOUND ON SECTION MAP 4, IN BLOCK 2, AND THE SPECIFIC PARCEL NUMBER IS 12.

METHOD OF NUMBERING PARCELS WHEN LANDS ARE DIVIDED OR SUBDIVIDED:

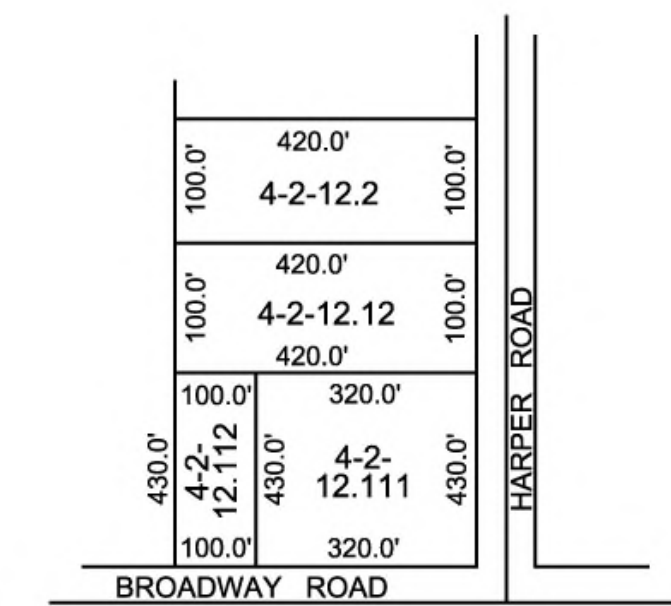


1. SAMPLE PARCEL SECTION-4, BLOCK-2, PARCEL-12.

2. WHEN A PARCEL IS DIVIDED INTO TWO PARCELS, THE PARCEL SOLD OFF BECOMES 4-2-12.2 AND THE RETAINED PORTION BECOMES 4-2-12.1.

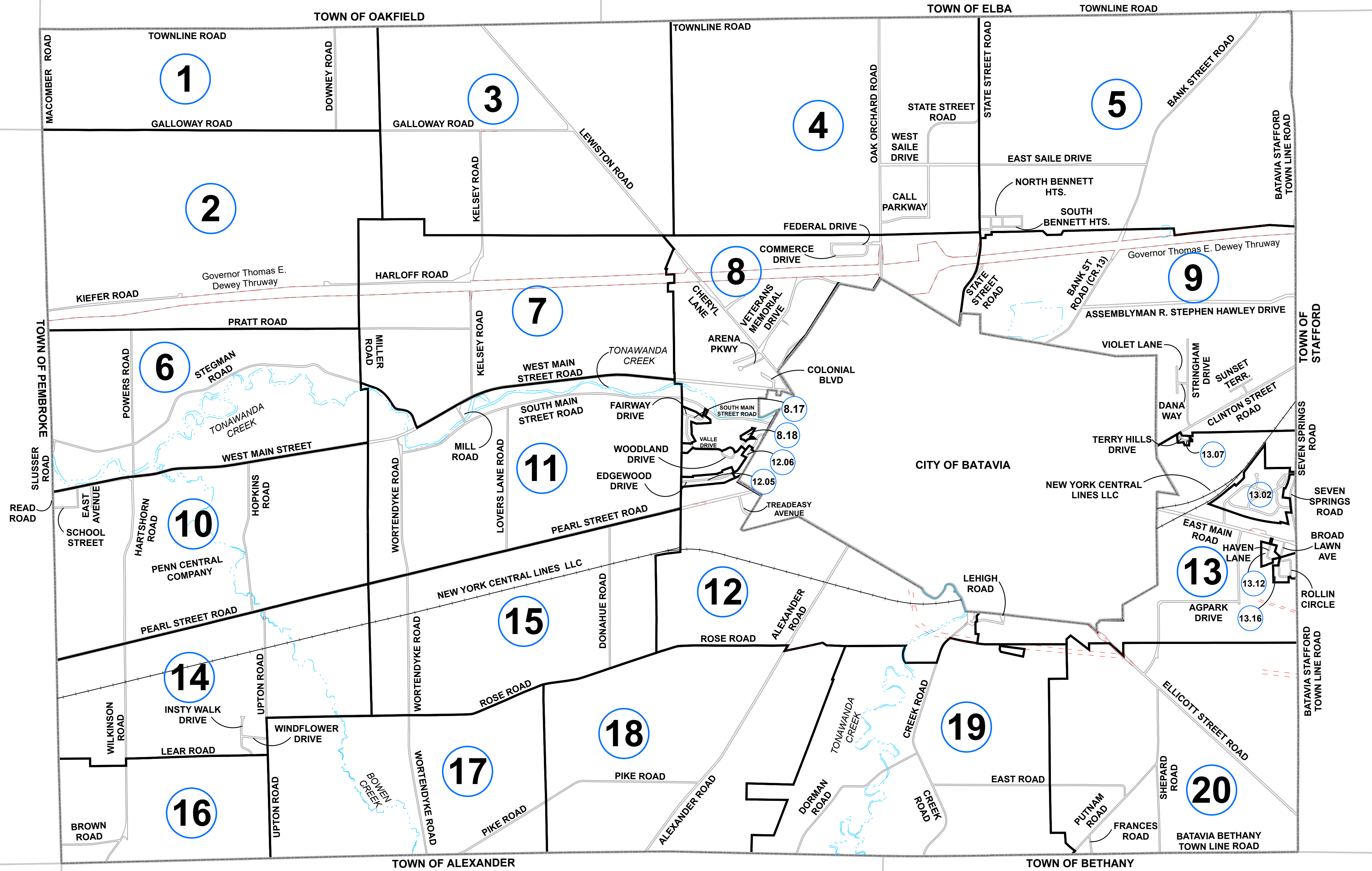


3. WHEN A PARCEL IS RESUBDIVISIONED SUCH AS 4-2-12.1, THE PARCEL SOLD OFF BECOMES 4-2-2.12 AND THE RETAINED PORTION BECOMES 4-2-12.11.



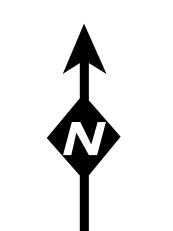
4. WHEN SUBSEQUENT DIVISION TAKES PLACE, THE PARCEL RETAINED IS ALWAYS NUMBERED WITH THE SUFFIX "1", WHILE THE SOLD OFF PARCEL IS SUFFIXED STARTING WITH "2" & NUMBERING UP CONSECUTIVELY.

5. IF A PARCEL IS MADE INTO A "SUBDIVISION" CONTAINING MANY LOTS, A NEW BASE NUMBER IS GIVEN TO EACH LOT RATHER THAN USING THE PROCEDURE EXPLAINED ABOVE.



THIS MAP WAS PREPARED FOR TAX PURPOSES ONLY AND IS NOT TO BE REPRODUCED OR USED FOR SURVEYING OR CONVEYANCING.
 PREPARED BY
 McINTOSH & MCKINTOSH LAND SURVEYORS
 BATAVIA, NEW YORK
 UNDER AUTHORITY
 OF
 GENESEE COUNTY BOARD OF SUPERVISORS
 Data converted to digital taxmap format, August 2004, by Webster Mapping

LEGEND
 RAILROAD
 STREAM OR DITCH
 ROAD OR RAILROAD BNDY
 MUNICIPAL BOUNDARY
 MAP SECTION
 EASEMENT



TAX MAP
 Town of Batavia
 GENESEE COUNTY, NEW YORK
 3,000 Feet
 GRAPHIC SCALE
 1"=2000'

INDEX MAP

MAP DATE: March 2005