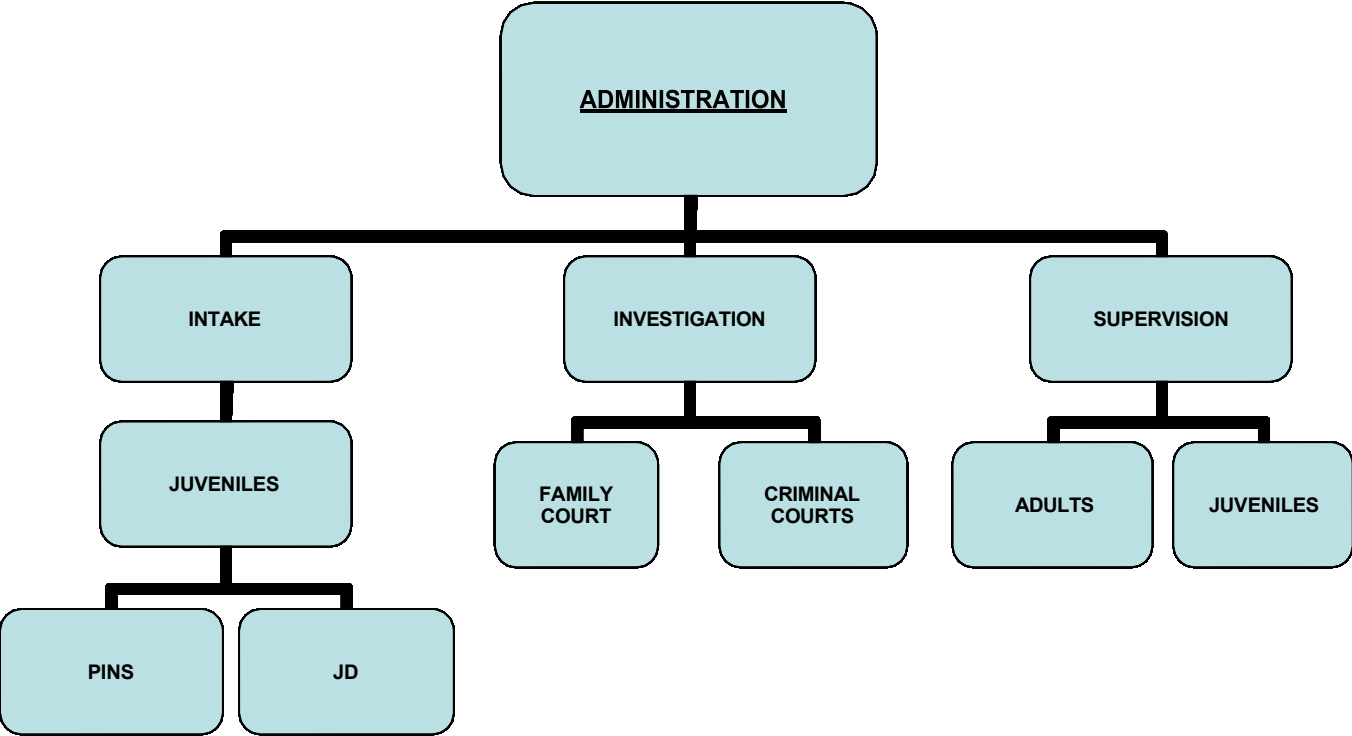


GENESEE COUNTY PROBATION DEPARTMENT 2026
ORGANIZATIONAL CHART



DEPARTMENT DESCRIPTION

The Genesee County Probation Department is an integral part of the criminal justice system of Genesee County providing mandated services of intake, investigation, supervision, and the collection of fines for the courts and restitution for victims. Statewide there is twice the number of offenders on probation as there are in prison or on parole combined. Probation is the most common and one of the most cost effective sentences imposed in the United States. The average daily cost of supervising a probationer is only a few dollars a day compared to the hefty cost of housing an inmate in prison.

STRATEGIC FRAMEWORK

Mission

The Mission of the Genesee County Probation Department is to enhance the safety of victims and communities through the fair and effective supervision of community-based offenders, community partnerships, and results-driven management practices.

Key 2025 Accomplishments

- * In an effort to educate members of the community about the role Probation plays in the criminal justice system, Senior PO Traci Russo & PO Ben Heale participated in the "Trunk or Treat" event on Halloween night in the City of Batavia along with representatives from the Batavia Police and Fire Departments; Senior PO Michele Tucci & POs Ben Heale, Brianne Paganello and Dakota Nicholson participated in the "Stuff the Cruiser" event in the City of Batavia along with other members of local law enforcement; Supervisor Jason Mindler spoke to the Corrections Class at GCC; Senior PO Ben Heale participated in the Batavia Community Forum on substance abuse at Terry Hills; Senior PO Michele Tucci & PO Dakota Nicholson presented to the LeRoy High School Business Law Class about a career in Probation; Supervisor Jason Mindler spoke to the Independent Living Class through Job Development; Senior PO Michele Tucci & PO Kelsey Kasmarek participated in the Youth Bureau's Safe Summer Carnival; Supervisor Jason Mindler & POs Ben Heale, Zach Tacy & Kelsey Kasmarek participated in STOP DWI Night at the Ballpark; POs Ben Heale & Zach Tacy participated in the Batavia Police Community Night Out in the City of Batavia; we also maintain a Department Facebook Page.
- * To help promote positive change in the field of criminal justice, Probation Director Tim Michalak served on the Genesee County Criminal Justice Advisory Council, Genesee County STOP-DWI Advisory Board, New York State Council of Probation Administrators, Genesee Community College Criminal Justice Advisory Council, and the Genesee County Threat Advisory Committee; Senior Probation Traci Russo served on the Genesee County Youth Court Board and the Genesee County Juvenile Justice Planning Committee; Supervisor Jason Mindler served on the Genesee County Safety Committee; Senior Probation Officer Carly Luttrell served on the Genesee County Youth Board; Senior Probation Officer Michele Tucci was a committee member for the Bivona Summit On Child Abuse; and Senior Probation Officers Michele Tucci and Traci Russo were members of the Genesee County Justice for Children Multidisciplinary Team.
- * The Genesee County Probation Department was again in full compliance with the New York State Staff Development Standards for Probation Professionals and we received commendation for our contribution to public safety and offender accountability for collecting DNA from offenders sentenced to probation.
- * We continue to manage a specialized caseload for Domestic Violence cases.
- * We developed policies and procedures within our Department for two new programs.
- * The Probation Department continued our role as Lead Agency for the PINS Plan.
- * With Stop DWI funding, we continued our "Alcohol Blitz Program" which is a mandatory alcohol/substance abuse testing program for DWI offenders.

DEPARTMENT: PROBATION

- * Intensive supervision of sex offenders to include the use of polygraph examinations.
- * We continue to have staff trained in Evidence Based Practices to include Interactive Journaling.
- * The continued use of a flexible work schedule to assist in the supervision of greatest and high risk offenders while maintaining fiscal responsibility with regards to overtime. Also continued the option for compensatory time versus overtime pay.
- * We continue to scan and electronically store our closed paper files into Docuware.
- * Use of AllPaid for collection of Restitution, Fines and DWI Supervision Fees.

Key 2026 Goals

- * Ignition Interlock monitoring of DWI offenders.
- * Court-ordered investigations and supervision continue to focus on the criminogenic needs of offenders. Services are more closely aligned with the needs of these offenders.
- * Collection of offender DNA samples to be included in the NYS DNA Databank.
- * Identification of greatest and high risk offenders and allocation of resources accordingly.
- * Focus on restitution collection for victims in the community.

BUDGET SUMMARY

<u>Appropriation By Object</u>	<u>Adopted 2024</u>	<u>Actual 2024</u>	<u>Adopted 2025</u>	<u>Estimated 2025</u>	<u>Adopted 2026</u>
Salary/Fringe	1,575,819	1,626,610	1,764,706	1,764,706	1,817,783
Equipment	0	0	0	0	0
Contractual	63,800	50,894	68,625	68,625	64,550
Total Appropriation	1,639,619	1,677,504	1,833,331	1,833,331	1,882,333
Revenue	387,631	398,565	407,961	407,961	441,564
Net County Support	1,251,988	1,278,939	1,425,370	1,425,370	1,440,769
FTE's	17	17	17	17	17

DEPARTMENT: PROBATION

DIVISION: INTAKE

DIVISION DESCRIPTION

Intake services are provided so that suitable cases are resolved non-judicially and all others are either immediately referred for petition for court intervention, or referred to other agencies where appropriate. Intake is a mandated service for Persons In Need of Supervision (PINS) and Juvenile Delinquents (JD) per the New York State Family Court Act. The Probation Department assesses all youth for their static and dynamic factors and how those indicators measure risk and protective factors. These screenings allow us to allocate our resources to the higher risk levels as needed. All juveniles are supervised.

BUDGET SUMMARY

<u>Appropriation By Object</u>	<u>Adopted 2024</u>	<u>Actual 2024</u>	<u>Adopted 2025</u>	<u>Estimated 2025</u>	<u>Adopted 2026</u>
Salary/Fringe	186,023	199,361	204,553	204,553	239,156
Equipment	0	0	0	0	0
Contractual	7,506	5,988	8,074	8,074	7,594
Total Appropriation	193,529	205,349	212,627	212,627	246,750
Revenue	186,023	199,361	204,553	204,553	239,156
Net County Support	7,506	5,988	8,074	8,074	7,594
FTE's	2	2	2	2	2

BUDGET HIGHLIGHTS

The PINS legislation has made the need for collaboration on the local level even more important. Genesee County has done that. The legislation has placed more responsibility on communities to develop more services to address this population in lieu of just being able to go to Family Court. Probation's role is to first assess the youth's risk and needs, make appropriate referrals to the community, and provide supervision while the youth and family work with community agencies to address identified areas. It is through continued agency collaboration that we have been able to address the needs of youth and families. Due to the "Raise the Age" Legislation, 16 & 17 year old youths are no longer considered adults in the criminal court system.

INDICATORS

	<u>Actual 2024</u>	<u>Estimated 2025</u>	<u>Estimated 2026</u>
INTAKES			
Information Opened	74	66	70
	74	46	60
FINAL ACTION			
Petitioned Immediately	10	10	10
Not Followed Through By Client	8	12	10
Mutual Agreement for Resolution	38	32	35
Sent To Court Without Agreement	10	12	11
TYPES OF CASES (Intakes Opened)			
Juvenile Delinquent	42	22	32
Person In Need Of Supervision	32	24	28

DEPARTMENT: PROBATION

DIVISION: INVESTIGATION

DIVISION DESCRIPTION

Investigations are mandated by New York State law and are provided by probation departments statewide. The types of investigations can be Criminal, Family Court (JD, PINS, Adoption, Custody) or address specific requests of the court such as Relief from Civil Disabilities and Updates. The objective of the investigation and report is to provide the court with relevant and reliable information, in a succinct, analytical presentation for decision making.

BUDGET SUMMARY

<u>Appropriation By Object</u>	<u>Adopted 2024</u>	<u>Actual 2024</u>	<u>Adopted 2025</u>	<u>Estimated 2025</u>	<u>Adopted 2026</u>
Salary/Fringe	347,449	356,812	390,038	390,038	394,657
Equipment	0	0	0	0	0
Contractual	14,074	11,227	15,138	15,138	14,239
<hr/>					
Total Appropriation	361,523	368,039	405,176	405,176	408,896
Revenue	50,402	49,801	50,852	50,852	50,602
Net County Support	311,121	318,238	354,324	354,324	358,294
FTE's	3	3	3	3	3

BUDGET HIGHLIGHTS

Investigations completed by Probation are invaluable and are used by many in the criminal justice system. The information gathered during an Investigation identifies the needs of an offender which may be useful when determining how to potentially allocate resources. The Investigation also focuses on the impact the crime has had on the victim of the offense. As a result, restitution can be ordered to make the victim financially whole again. Ultimately the Investigation will help the judge determine an appropriate sentence. Expedited investigations are provided to Genesee County Court, upon request, where a defendant will be sent to the New York State Department of Corrections. This reduces the number of jail days and in turn assists the County with trimming this expense.

INDICATORS

	<u>Actual 2024</u>	<u>Estimated 2025</u>	<u>Estimated 2026</u>
Family Court Investigations			
Juvenile	17	24	21
Adult	21	2	12
Criminal Court Investigations			
Felonies	296	250	273
Misdemeanors	206	224	215

DEPARTMENT: PROBATION

DIVISION: SUPERVISION

DIVISION DESCRIPTION

For persons placed on probation supervision, evidenced-based practices in the field of probation are used to advance public safety by holding the offender accountable, improving offender competencies, restoring victims, and reducing recidivism. There are four levels of probation supervision. Each level has its own defined level of intensity. Each probationer is given a risk and needs assessment to place them in the appropriate supervision level. This allows the Department to focus its resources on the greatest and high risk probationers for community protection.

BUDGET SUMMARY

<u>Appropriation By Object</u>	<u>Adopted 2024</u>	<u>Actual 2024</u>	<u>Adopted 2025</u>	<u>Estimated 2025</u>	<u>Adopted 2026</u>
Salary/Fringe	1,042,347	1,070,437	1,170,115	1,170,115	1,183,970
Equipment	0	0	0	0	0
Contractual	42,221	33,680	45,414	45,414	42,717
Total Appropriation	1,084,568	1,104,117	1,215,528	1,215,528	1,226,687
Revenue	151,206	149,403	152,556	152,556	151,806
Net County Support	933,362	954,714	1,062,972	1,062,972	1,074,881
FTE's	9	9	9	9	9

BUDGET HIGHLIGHTS

Probation is and has been an alternative to incarceration for our community. Probation is a cost effective sanction compared to the cost of local and/or state incarceration. While supervising an offender in the community, the Probation Department also attempts to effectuate change, thus potentially reducing future recidivism.

INDICATORS

	<u>Actual 2024</u>	<u>Estimated 2025</u>	<u>Estimated 2026</u>
Caseload			
Adult	478	478	478
Juvenile	25	18	22
Family Court Violations			
New Charge	0	0	0
Absconded	0	0	0
Technical	1	2	2
Criminal Court Violations			
New Charge	50	28	39
Absconded	7	8	8
Technical	31	48	40
Discharge From Probation			
Terminated at Expiration	78	144	111
Terminated Before Expiration	25	16	21
Revoked	71	42	57
Other/Transfers	180	108	144